

Ali & Chris Homes  
3535 boul. St-Charles #304, Kirkland  
514-880-4689  
aliandchrishomes.com

White regions are excluded from total floor area. All room dimensions and floor areas must be considered approximate and are subject to independent verification. For method of measurement please contact Ali & Chris Homes.

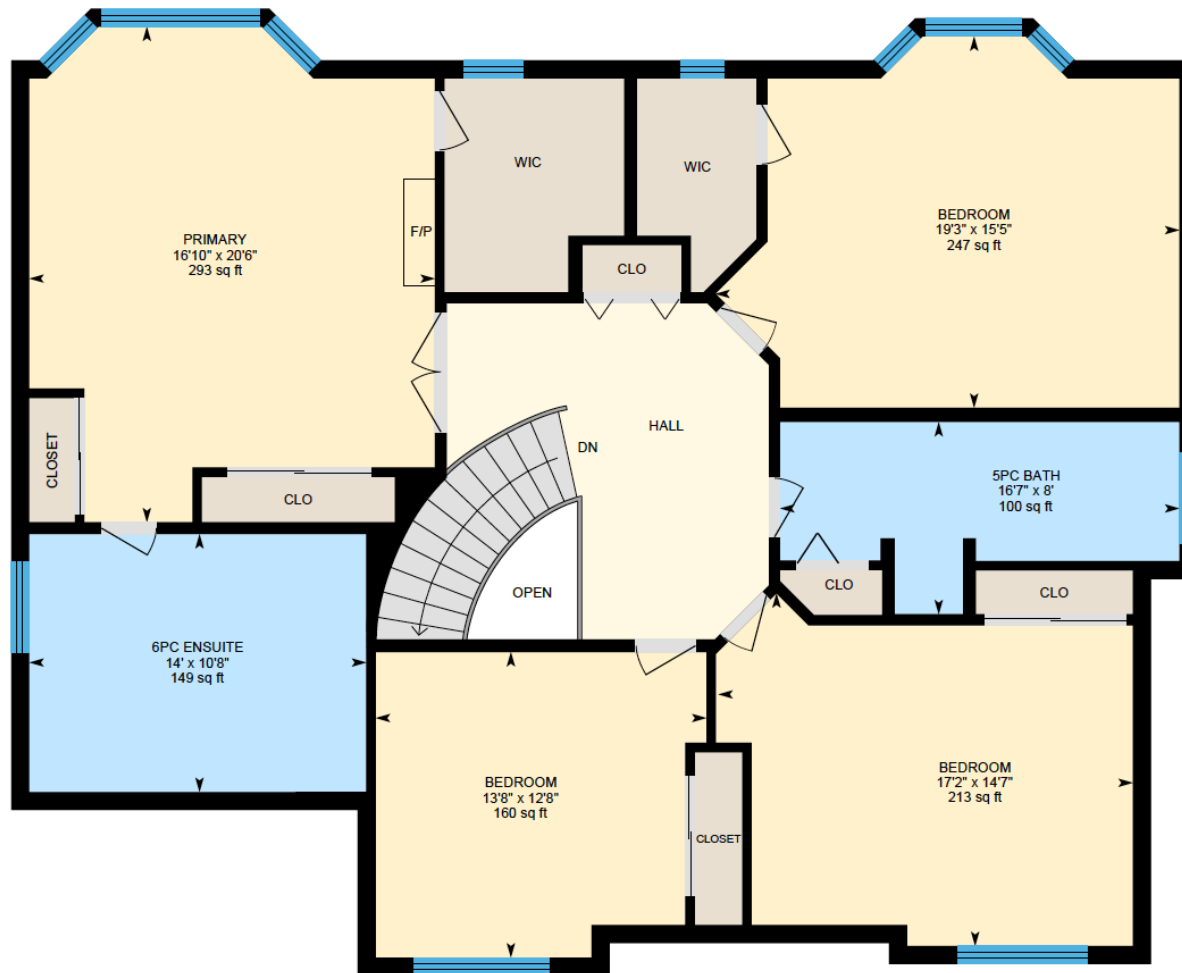
1<sup>st</sup> Floor: Total Interior Area: 1327 sq. ft.  
2<sup>nd</sup> Floor: Total Interior Area: 1596 sq. ft.  
Basement (walk out): 1216 sq. ft.



Ali & Chris Homes  
3535 boul. St-Charles #304, Kirkland  
514-880-4689  
aliandchrishomes.com

1<sup>st</sup> Floor: Total Interior Area: 1327 sq. ft.  
2<sup>nd</sup> Floor: Total Interior Area: 1596 sq. ft.  
Basement (walk out): 1216 sq. ft.

White regions are excluded from total floor area. All room dimensions and floor areas must be considered approximate and are subject to independent verification. For method of measurement please contact Ali & Chris Homes.



Ali & Chris Homes  
3535 boul. St-Charles #304, Kirkland  
514-880-4689  
aliandchrishomes.com

White regions are excluded from total floor area. All room dimensions and floor areas must be considered approximate and are subject to independent verification. For method of measurement please contact Ali & Chris Homes.

1<sup>st</sup> Floor: Total Interior Area: 1327 sq. ft.  
2<sup>nd</sup> Floor: Total Interior Area: 1596 sq. ft.  
Basement (walk out): 1216 sq. ft.



Ali & Chris Homes  
3535 boul. St-Charles #304, Kirkland  
514-880-4689  
aliandchrishomes.com

White regions are excluded from total floor area. All room dimensions and floor areas must be considered approximate and are subject to independent verification. For method of measurement please contact Ali & Chris Homes.

1<sup>st</sup> Floor: Total Interior Area: 1327 sq. ft.  
2<sup>nd</sup> Floor: Total Interior Area: 1596 sq. ft.  
Basement (walk out): 1216 sq. ft.