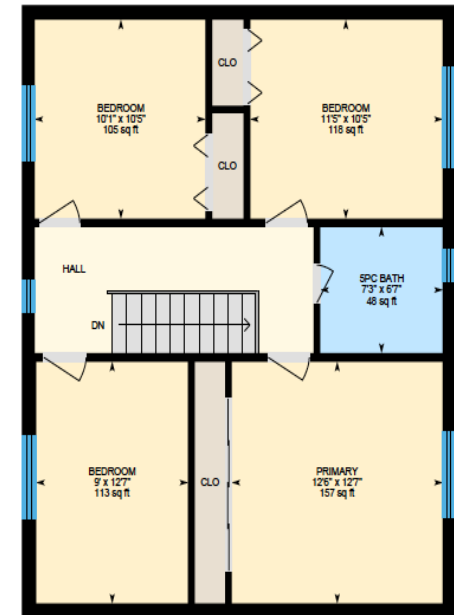
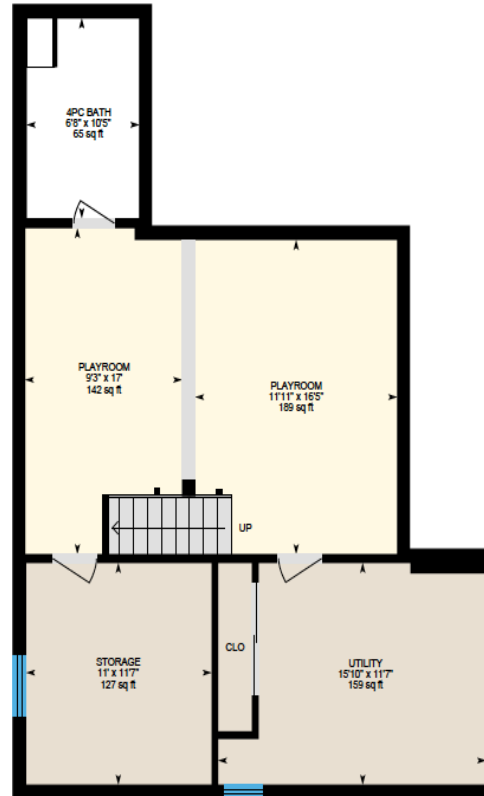
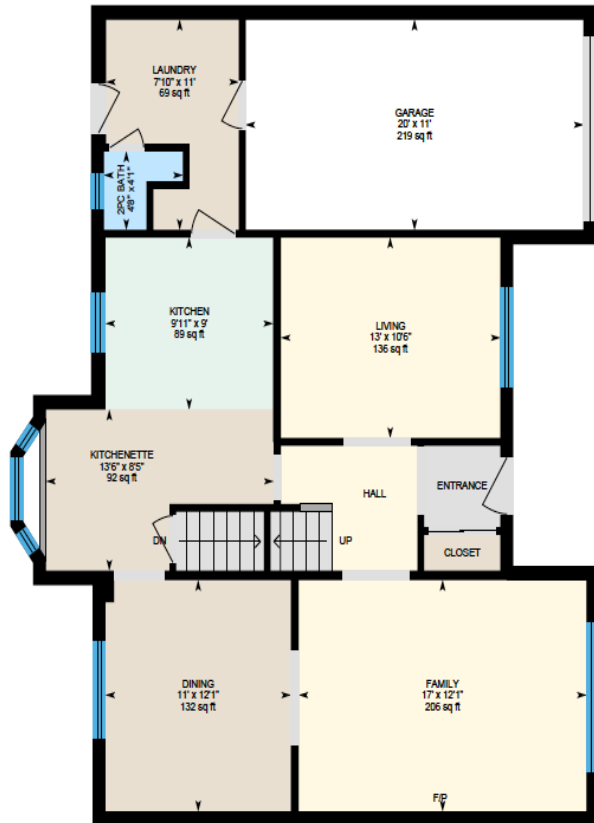




# 363 Windermere, Beaconsfield



Ali & Chris Homes  
3535 boul. St-Charles #304, Kirkland  
514-880-4689  
aliandchrishomes.com

1<sup>st</sup> Floor: Total Interior Area: 882 sq. ft.  
2<sup>nd</sup> Floor: Total Interior Area: 735 sq. ft.  
Basement: 691 sq. ft.

White regions are excluded from total floor area. All room dimensions and floor areas must be considered approximate and are subject to independent verification. For method of measurement please contact Ali & Chris Homes.



# 363 Windermere, Beaconsfield



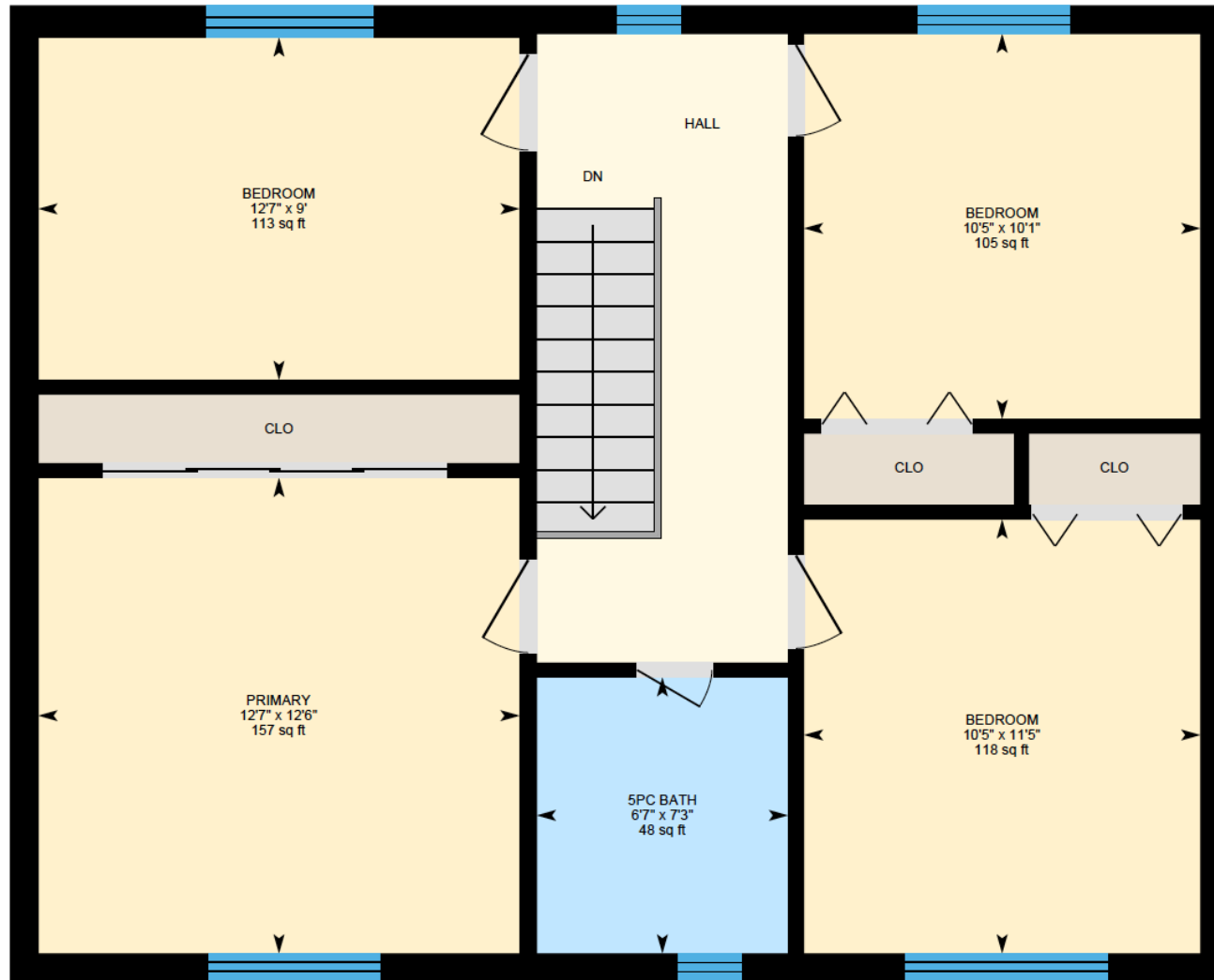
Ali & Chris Homes  
3535 boul. St-Charles #304, Kirkland  
514-880-4689  
aliandchrishomes.com

1<sup>st</sup> Floor: Total Interior Area: 882 sq. ft.  
2<sup>nd</sup> Floor: Total Interior Area: 735 sq. ft.  
Basement: 691 sq. ft.

White regions are excluded from total floor area. All room dimensions and floor areas must be considered approximate and are subject to independent verification. For method of measurement please contact Ali & Chris Homes.



# 363 Windermere, Beaconsfield



Ali & Chris Homes  
3535 boul. St-Charles #304, Kirkland  
514-880-4689  
aliandchrishomes.com

1<sup>st</sup> Floor: Total Interior Area: 882 sq. ft.  
2<sup>nd</sup> Floor: Total Interior Area: 735 sq. ft.  
Basement: 691 sq. ft.

White regions are excluded from total floor area. All room dimensions and floor areas must be considered approximate and are subject to independent verification. For method of measurement please contact Ali & Chris Homes.



# 363 Windermere, Beaconsfield



Ali & Chris Homes  
3535 boul. St-Charles #304, Kirkland  
514-880-4689  
aliandchrishomes.com

1<sup>st</sup> Floor: Total Interior Area: 882 sq. ft.  
2<sup>nd</sup> Floor: Total Interior Area: 735 sq. ft.  
Basement: 691 sq. ft.

White regions are excluded from total floor area. All room dimensions and floor areas must be considered approximate and are subject to independent verification. For method of measurement please contact Ali & Chris Homes.