

Ali & Chris Homes
3535 boul. St-Charles #304, Kirkland
514-880-4689
aliandchrishomes.com

Main Floor Total Interior Area: 1126 sqft.
Second Floor Total Interior Area: 1155 sqft.
Basement Total Interior Area: 1051 sqft.

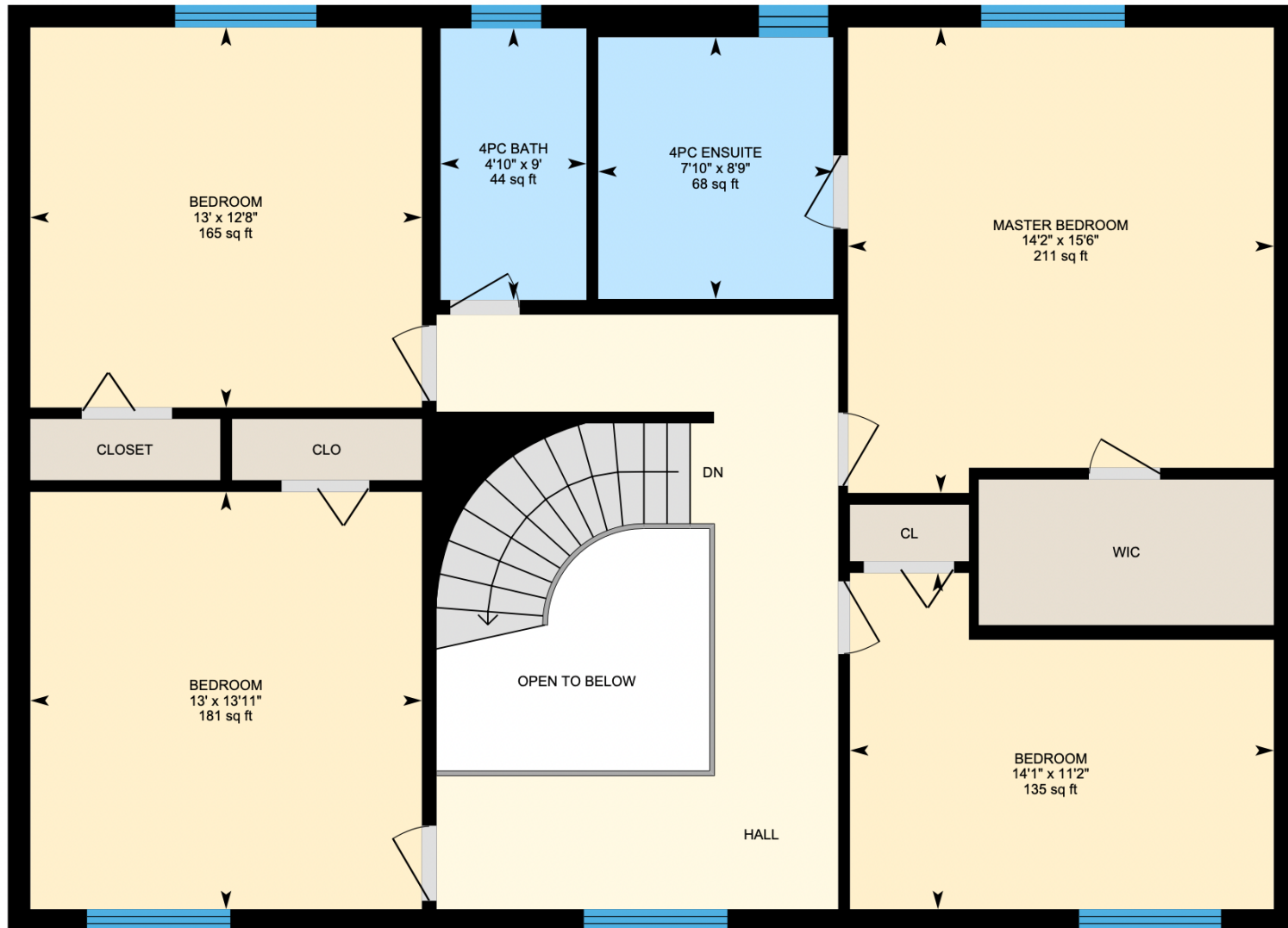
White regions are excluded from total floor area. All room dimensions and floor areas must be considered approximate and are subject to independent verification. For method of measurement please contact Ali & Chris Homes.



Ali & Chris Homes
3535 boul. St-Charles #304, Kirkland
514-880-4689
aliandchrishomes.com

Main Floor Total Interior Area: 1126 sqft.
Second Floor Total Interior Area: 1155 sqft.
Basement Total Interior Area: 1051 sqft.

White regions are excluded from total floor area. All room dimensions and floor areas must be considered approximate and are subject to independent verification. For method of measurement please contact Ali & Chris Homes.



Ali & Chris Homes
3535 boul. St-Charles #304, Kirkland
514-880-4689
aliandchrishomes.com

Main Floor Total Interior Area: 1126 sqft.
Second Floor Total Interior Area: 1155 sqft.
Basement Total Interior Area: 1051 sqft.

White regions are excluded from total floor area. All room dimensions and floor areas must be considered approximate and are subject to independent verification. For method of measurement please contact Ali & Chris Homes.



Ali & Chris Homes
3535 boul. St-Charles #304, Kirkland
514-880-4689
aliandchrishomes.com

Main Floor Total Interior Area: 1126 sqft.
Second Floor Total Interior Area: 1155 sqft.
Basement Total Interior Area: 1051 sqft.

White regions are excluded from total floor area. All room dimensions and floor areas must be considered approximate and are subject to independent verification. For method of measurement please contact Ali & Chris Homes.